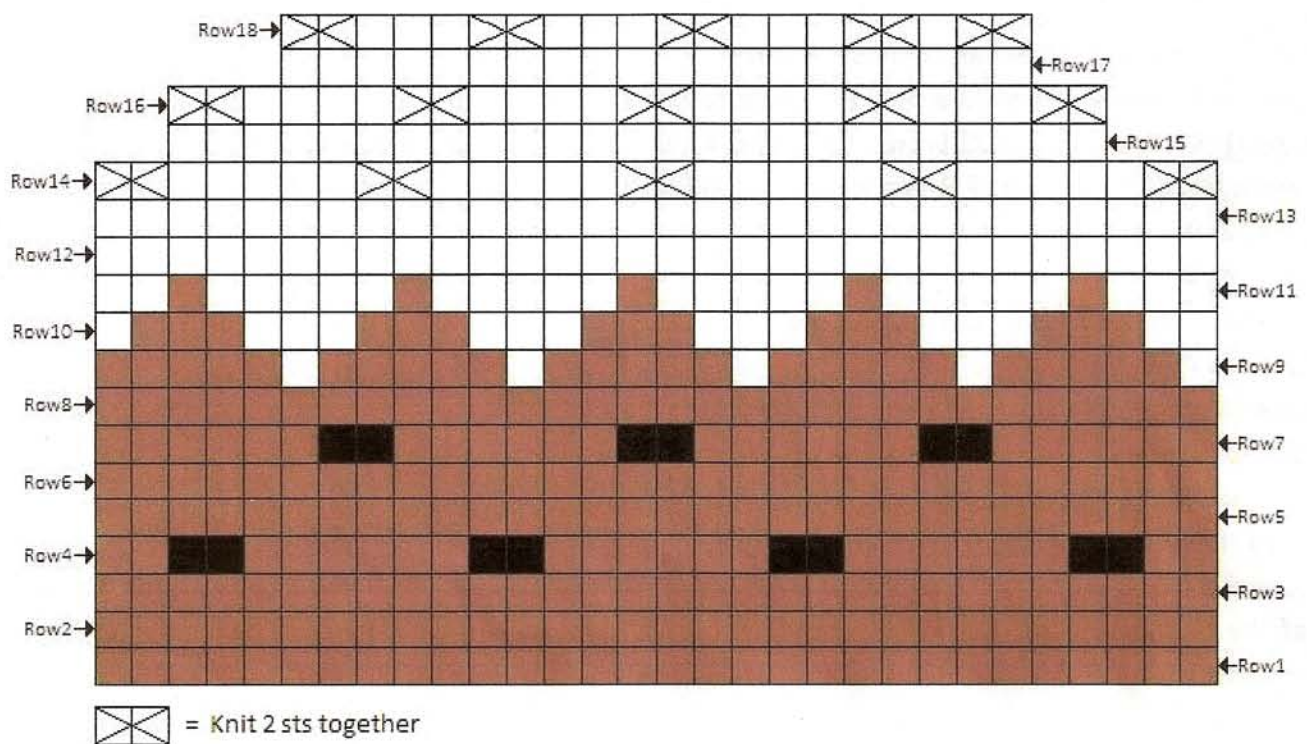


To Make Up

- Turn inside out and stitch white parts together then back up again and create loop out the middle at the top and stitch it back down to keep it in place.
- Stitch red berry and holly leaves in place.
- Stitch brown part together using brown wool, then stuff with toy stuffing and cat nip and draw string the bottom (like the bottom of the mice).



Catnip Christmas Pudding Knitting Pattern

Needed:

- Brown, Black, White, Red and Green wool
- Size 10 (3¼mm) needles for the pud and 11 (2¾mm) needles for the berry and holly leaves

Cast on 30 stitches in Brown

Line 1: K

Line 2: P

Line 3: K

Line 4: P2 Brown, Then: P2 Black, P6 Brown, continue to last 4 sts, P2 Black, P2 Brown

Line 5: K

Line 6: P

Line 7: k6 Brown, K2 Black, K6 Brown continue to end

Line 8: P

Line 9: K1 White, K5 Brown continue to end

Line 10: P1 White, Then: P3 Brown, P3 White to last 2 sts, P2 White

Line 11: K3 White, Then: K1 Brown, K5 White, K1 Brown cont to last 2 sts and K2 White

(Here leave a long piece of Brown wool which will be used to sew up the brown part of the pudding)

Line 12: P

Line 13: K

Line 14: P2tog, P5, P2tog continue to end

Line 15: K

Line 16: P2tog, P4 continue to last 5sts, P3, P2tog

Line 17: K

Line 18: P2tog, P3 continue to last 3sts, P1, P2tog

Loop through remaining stitches and pull tight.

(Leave a long piece of white wool as this will serve the dual purpose of stitching up the white top part of the pudding and will also form the loop at the top from which the pudding may be hung up as an ornament.)

Red Berry:

Cast on 2sts

K

Purl-wise inc 1 in each stitch

K

P

K2tog twice

Slip one stitch over the other, loop through and pull tight

Stitch into a ball shape

Holly Leaves:

Using size 11 needles cast on 2 sts in Green

K 5 rows

Slip one stitch over the other, loop through and tie off